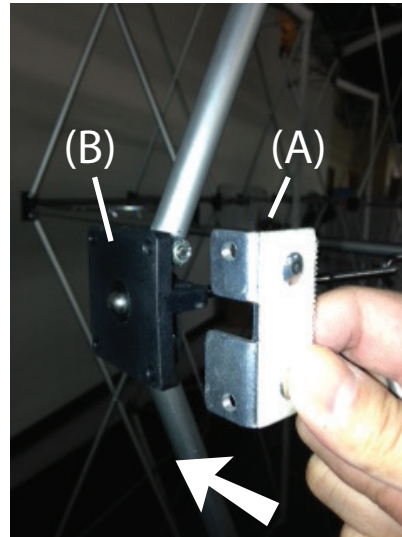
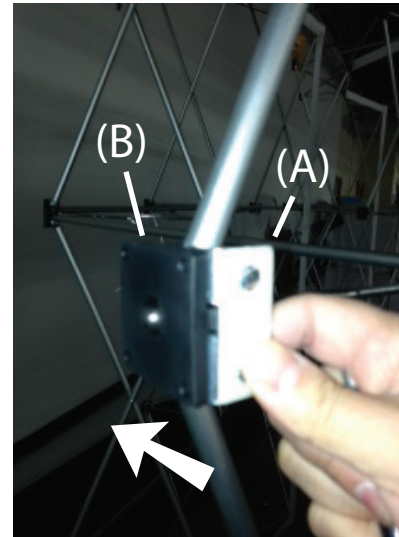


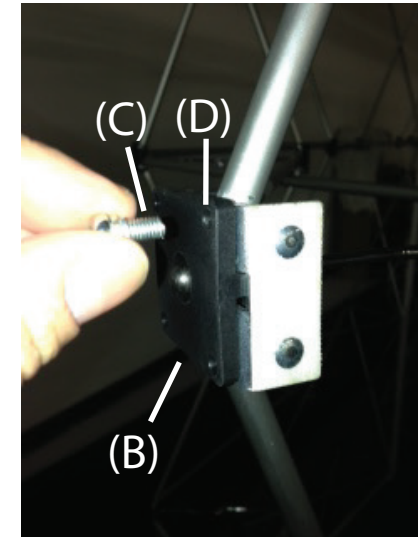
Side View of VBURST Pop-up (curved unit shown) with End Cap Bracket (A) Installed.



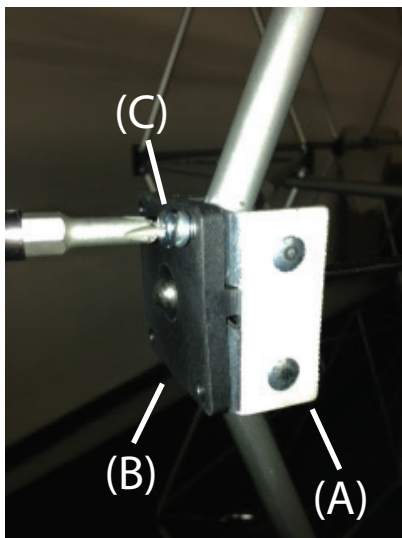
1. Place Bracket (A) to the inside of VBurst Hub (B).



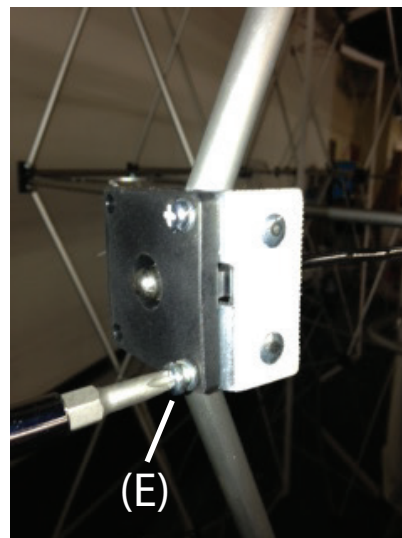
2. Place Bracket (A) to the inside of VBurst Hub (B).



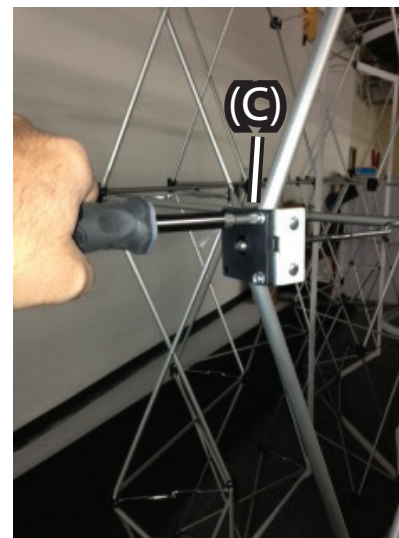
3. Place Bolt (C) with lock washer into Hub (B) top hole (D). Hand tighten top bolt to hold Bracket in place .



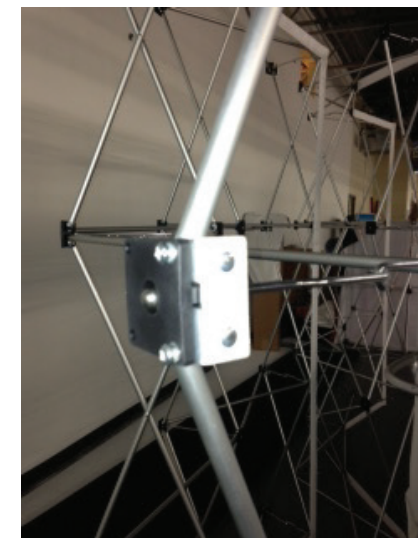
4. Lightly tighten Top Bolt (C) enough to hold the Bracket (A) snug to the Hub (B).



5. Add and tighten the Bottom Bolt (E) until snug.



6. Tighten Top Bolt (C) until snug.



7. Repeat until all four of the side back Hubs of the VBurst Pop-up have End Cap Brackets.