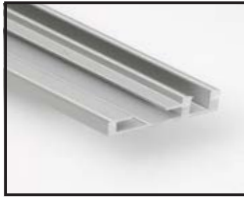




Hardware/Components



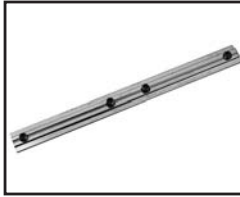
Single Sided Extrusion



Single Sided Extrusion



Mitre Connector



In Line Connector



Mural Bracket



3mm Hex Key

Tip: Remove all parts from the shipping materials and take an inventory to make sure you have everything needed. There is a parts list on your frame rendering.

1. Linking Extrusions



For larger frames that require an in line connector: join top pieces of the frame using the in line connector, repeat for bottom and sides. Tighten using the 3mm hex key.

2. Corner Connectors



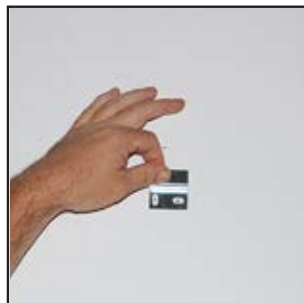
Slide corner brackets into the left and right side of the top and bottom extrusion and tighten the set screws using the 3 mm hex key.



Now slide the other end of your corner brackets into the side extrusions and tighten the set screws. You should now have your frame ready to mount to wall.

Note: It is now time to prep your wall for attachment of the hanging brackets to the wall. Optima Graphics does not supply the hardware for this due to all of the possible differences in the area for mounting.

3. Marking wall for installation



First two brackets should be installed one foot in from corner(s). Using a level and tape measure, find and mark the area where frame is to be installed.

4. Installation of top brackets



Install the top brackets to the wall first and re-check for levelness. Hang frame on brackets.

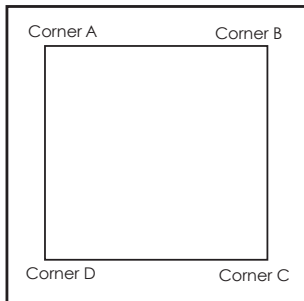
Note: It is recommended that hanging brackets be used every 5 feet for frames exceeding 10 ft. For greater stability, secure frame to wall using hanging brackets every five feet on the sides and bottom. **Because of frame flexing, we recommend at least 2 brackets on bottom and at least 1 on sides if over 48".**

5. Installing remaining brackets



Before installing brackets, measure middle of frame and compare to measurement of side. Adjust as needed to eliminate any "dip" or sag then mark and install brackets.

7. Installation/Removal of graphic



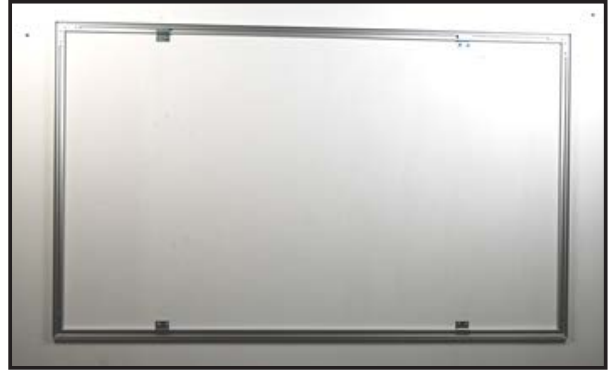
It is important to first insert graphic into each corner, then to the sides of the frame. If this is not done, graphic will not fit into the frame correctly.



Step 1

Insert corner A. Turn edge of graphic so silicon welt is perpendicular to face of graphic. Insert narrow side of welt with fabric to outside into the channel. Repeat for other side of this corner.

6. Frame installation complete



The frame is now ready for you to install the graphic.



Step 2

Repeat Step 1 for corner B, then insert corner C, followed by corner D, to complete the installation of the corners.

Step 3

Once all corners are inserted, press one silicon edge into channel from corners and work toward the center. Make sure welt is fully inserted into channel. Continue until all sides are done. Smooth out edges of graphic.



Graphic Removal



To remove the graphic from the frame, locate the fabric pull tab. Gently pull up on the tab to remove the fabric.